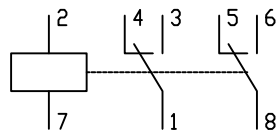
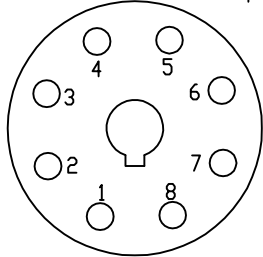
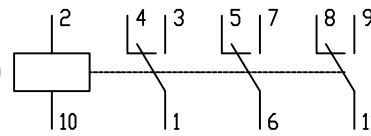
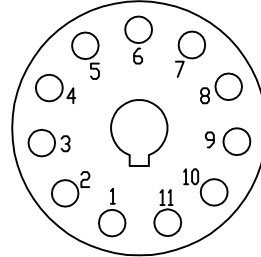


Relè OCTAL - Temporizzatore OCTAL



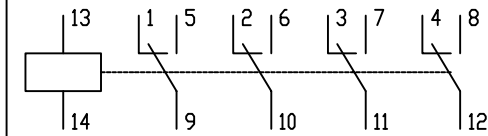
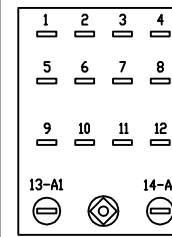
AC - DC

Relè UNDECAL



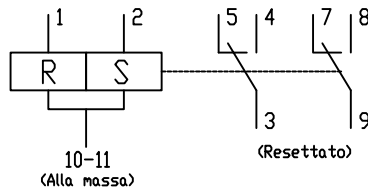
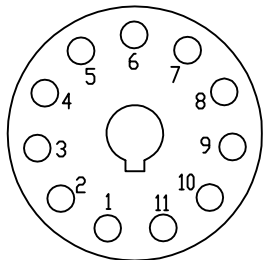
AC

MINI RELE' 14 - pin



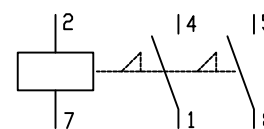
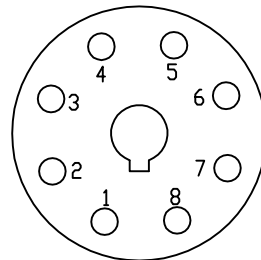
AC - DC

Relè BISTABILE -2 bobine- (zocc. UNDECAL)



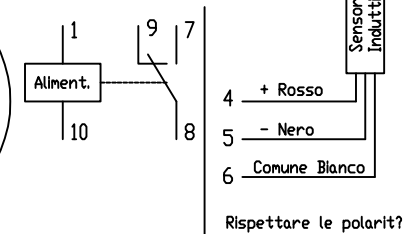
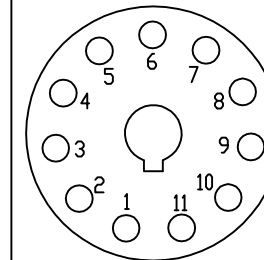
AC

Relè Finder p.p. commutatore Type 28.14 OCTAL



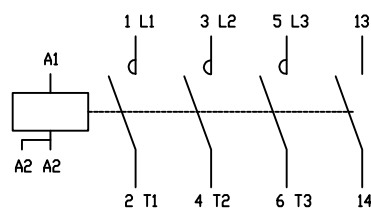
Ciclo operativo con quattro impulsi

Alimentatore AR1 Elcontrol UNDECAL per Sensore Induttivo

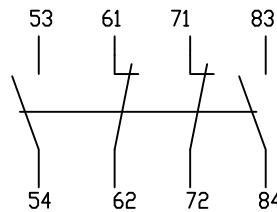


Rispettare le polarità?

Contattore Klockner-Moeller DIL 00M-10

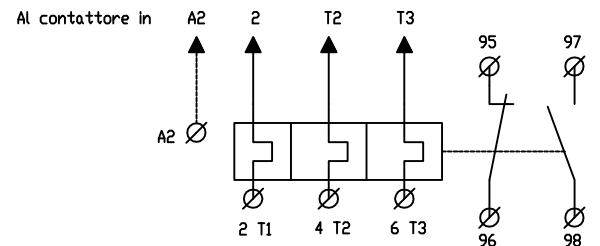


Contatti ausiliari superiori Klockner-Moeller 22 DIL M

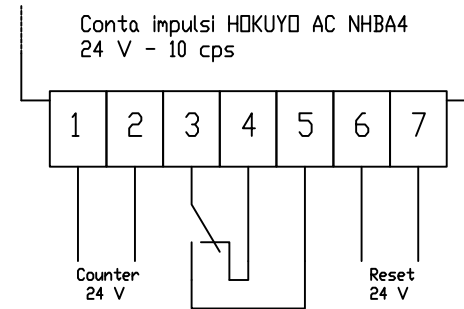


NB. A1 va collegato alla massa dell'Impianto il segnale di comando va all'A2 pi? comodo.

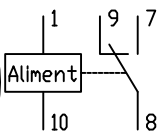
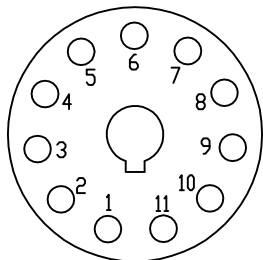
Relè termico Klockner-Moeller Z 00 -



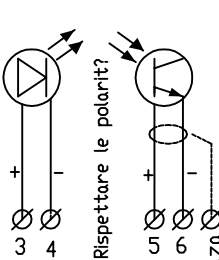
Conta impulsi HOKUYO AC NHBA4 24 V - 10 cps



Fotocomando ELCONTROL a barriera Alimentatore FR-L con LED -UNDECAL-

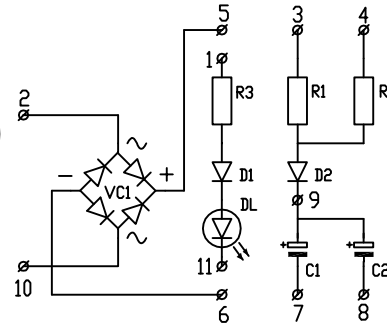
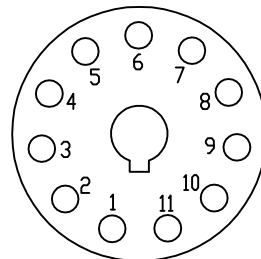


Barriera Emettit. Ricevit.



Cavo bipolare schermato per il Ricevitore. La calza deve essere unita al terminale negativo, morsetto n. 6 solo all'undecal (partenza)

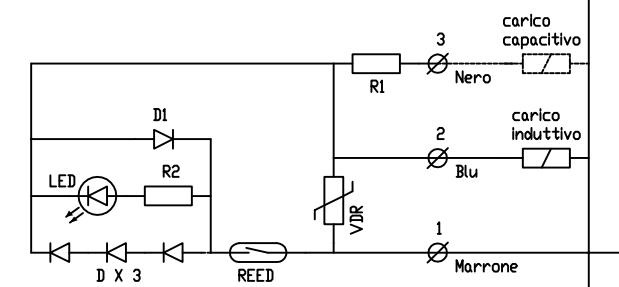
Ritardo per relè in c.c. scatola grigia UNDECAL con led



R1=100 ohm 5W
R2=220 ohm 5W
R3=1000 ohm 1/2 W
C1=470 micro_F DL=LED Rosso
C2=1000 micro_F D1=D2=1N4007 VC1=C35 - 08

Sensori magnetici di prossimità - montati sui cilindri pneumatici -

Affinchè il led funzioni correttamente rispettare le polarità? in cc. - +



I.T.I.S. F.ALBERTI IMOLA (Bologna)

Titolo

Data:

Cognome:

TAV.N.

Nome:

Classe: