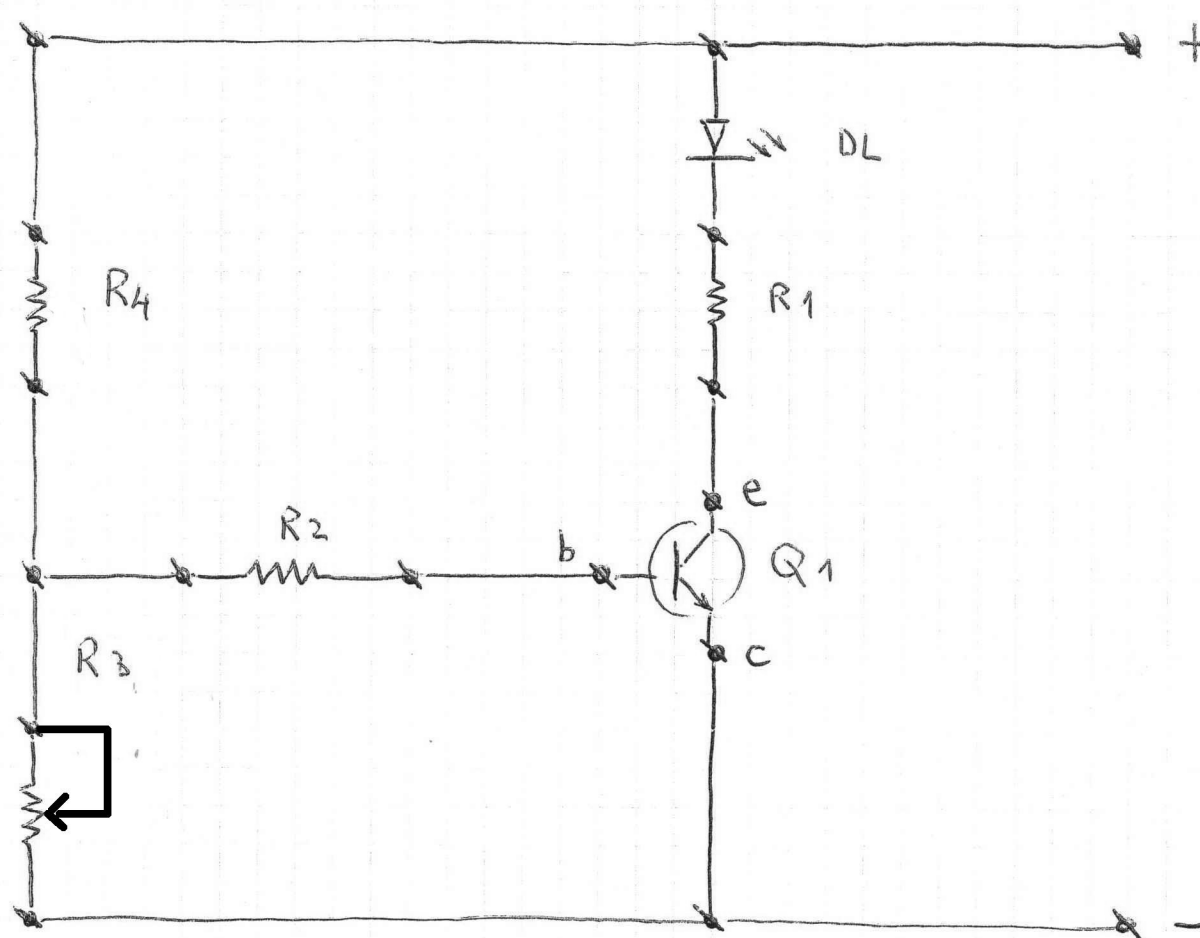


# TRANSISTOR USATO COME INTERRUTTORE



$R_1 = 1000 \text{ ohm}$

$R_2 = 1000 \text{ ohm}$

$R_3 = \text{Pot } 10/22k \text{ Ohm}$

$R_4 = 10.000 \text{ ohm}$

$DL = \text{Led}$

$Q_1 = 2N1711$

17 chiodi