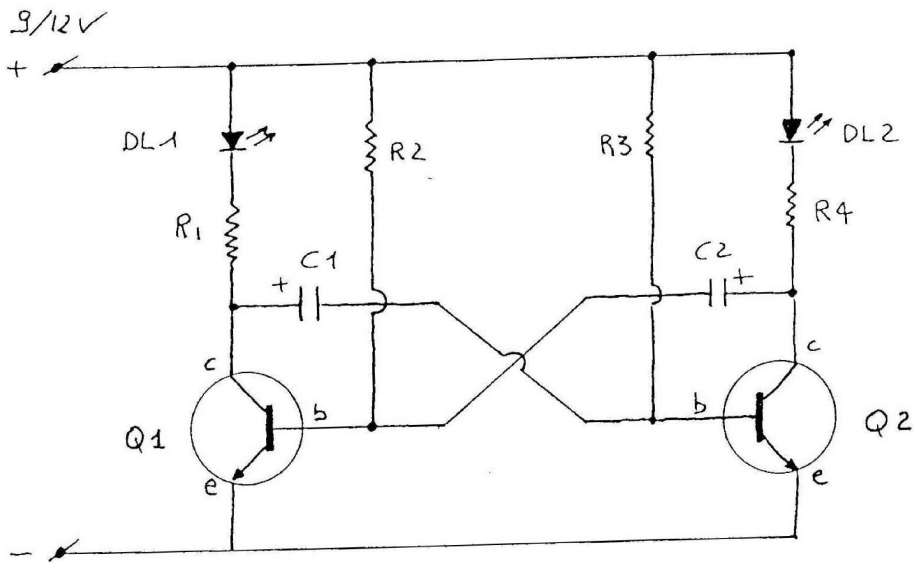


LAMPEGGIANTE CON 2 LED CON BC337



Elenco del materiale

$$R_4 = R_1 = 1K\Omega$$

$$C_1 = C_2 = 10\mu F \text{ 12V elettrolitico}$$

$$R_3 = R_2 = 100K\Omega$$

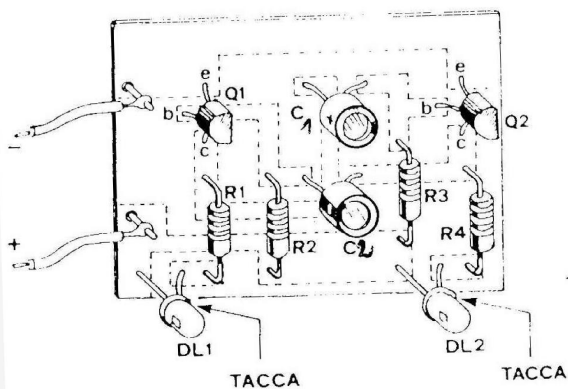
$$DL1 = DL2 = \text{LED colorati diversamente}$$

$$Q_1 = Q_2 = BC337$$

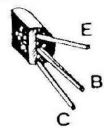
Funzionamento:

Dando tensione si accenderanno alternativamente i due LED.

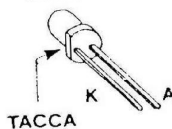
SCHEMA PRATICO DI MONTAGGIO E CONNESSIONI DEI SEMICONDUTTORI:



BC337



DIODO LED



CIRCUITO STAMPATO: LATO RAME

